



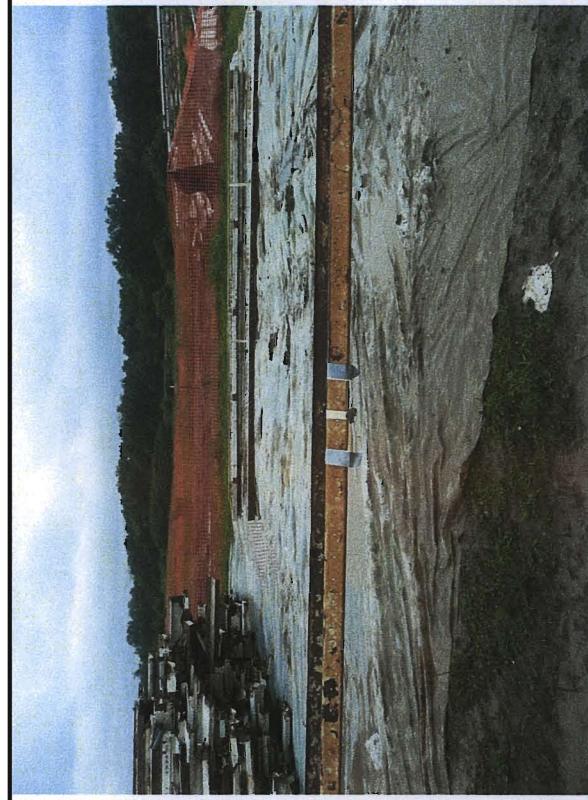
Photograph 35 Wipe Sample Location # 105RE16



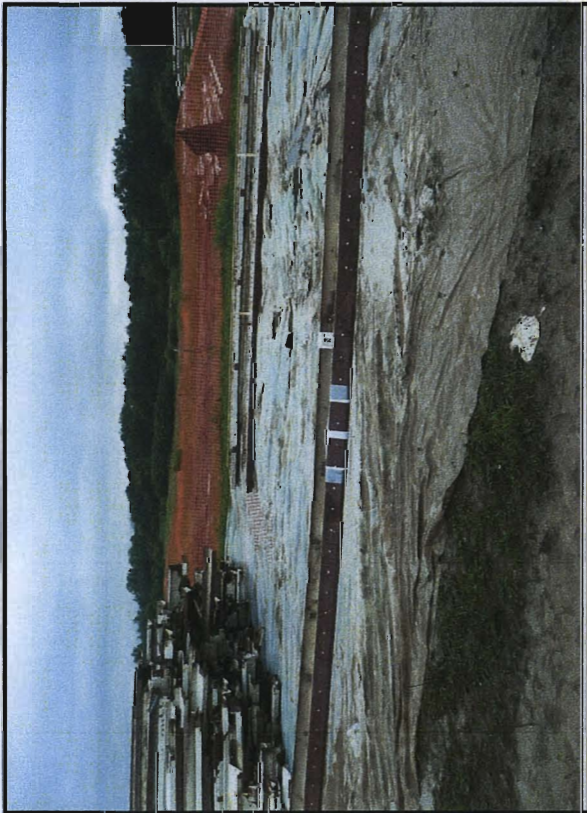
Photograph 36 Wipe Sample Location # 1188LE49



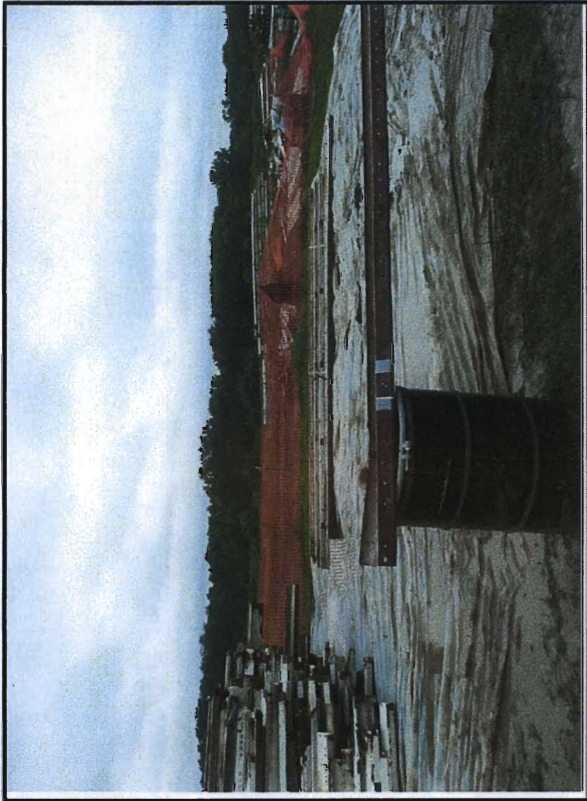
Photograph 37 Wipe Sample Location # 272LE41



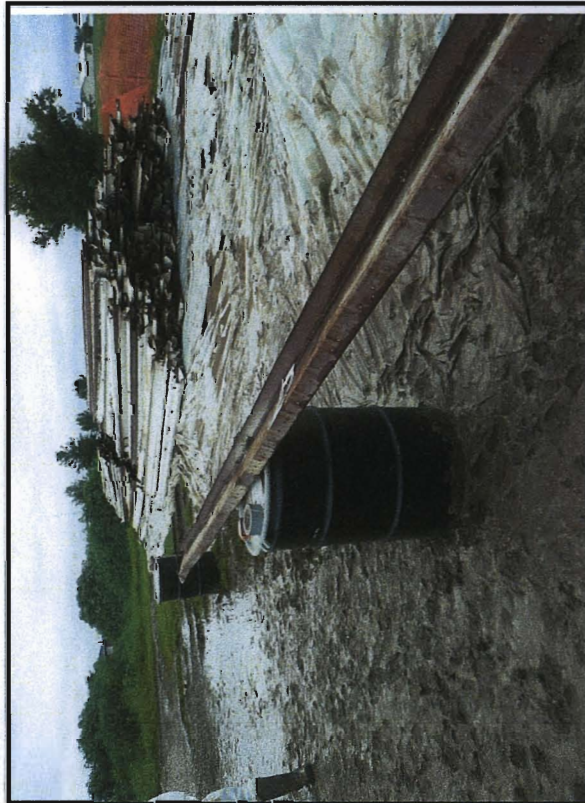
Photograph 38 Wipe Sample Location # 246LE29 & 246LE30



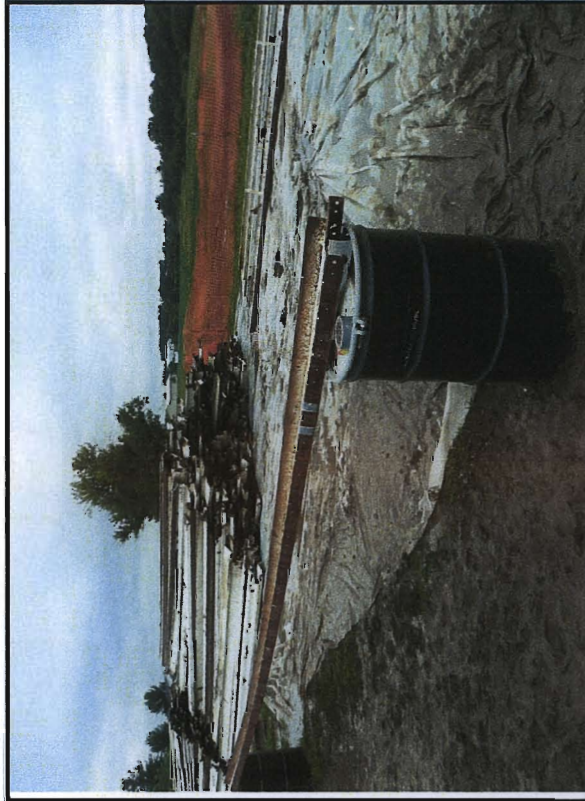
Photograph 39 Wipe Sample Location # 839LE39 (EPA Dup)



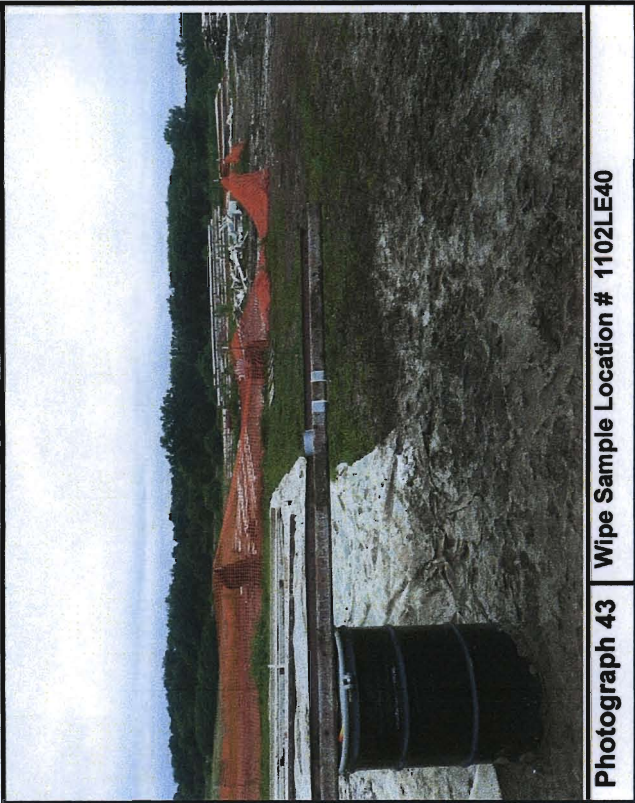
Photograph 40 Wipe Sample Location # 337RE7



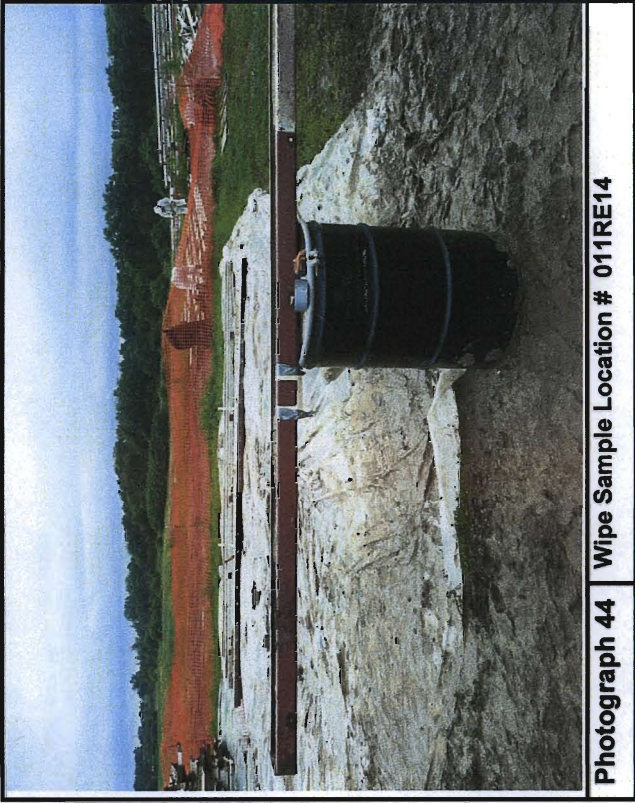
Photograph 41 Wipe Sample Location # 208T30



Photograph 42 Wipe Sample Location # 505RE64



Photograph 43 Wipe Sample Location # 1102LE40



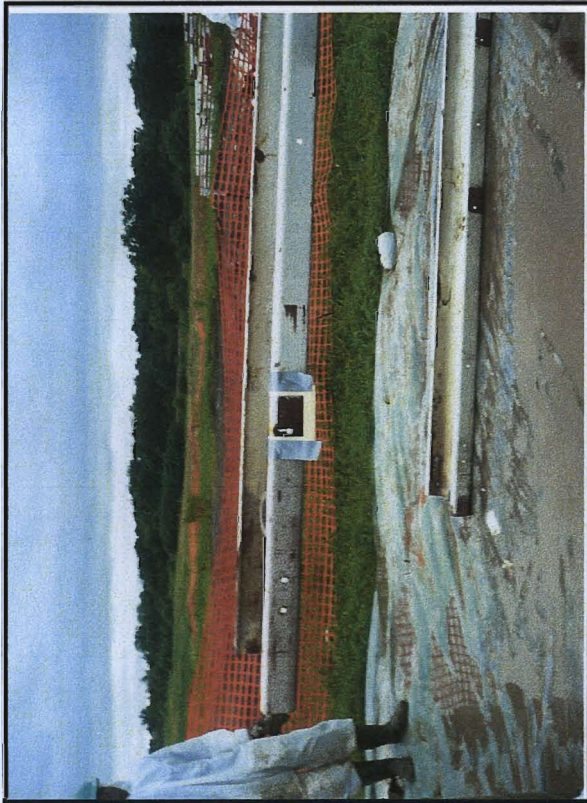
Photograph 44 Wipe Sample Location # 011RE14



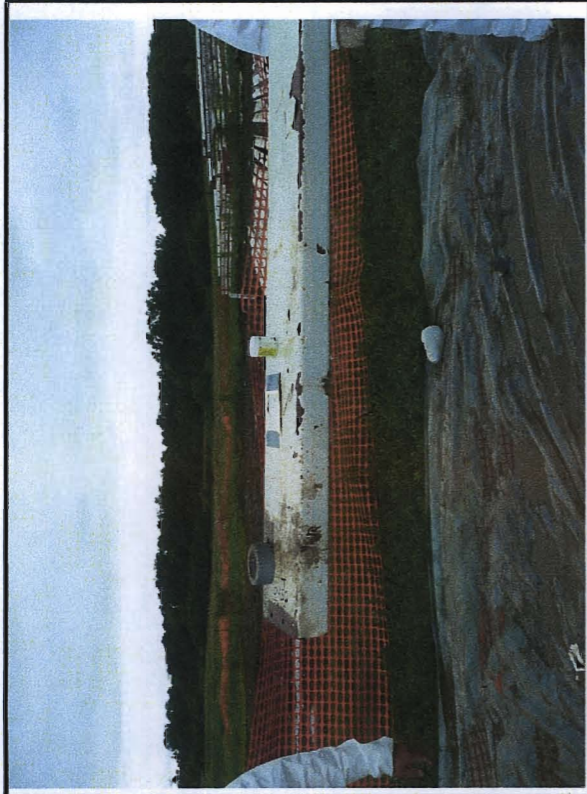
Photograph 45 Wipe Sample Location # 1226RE62



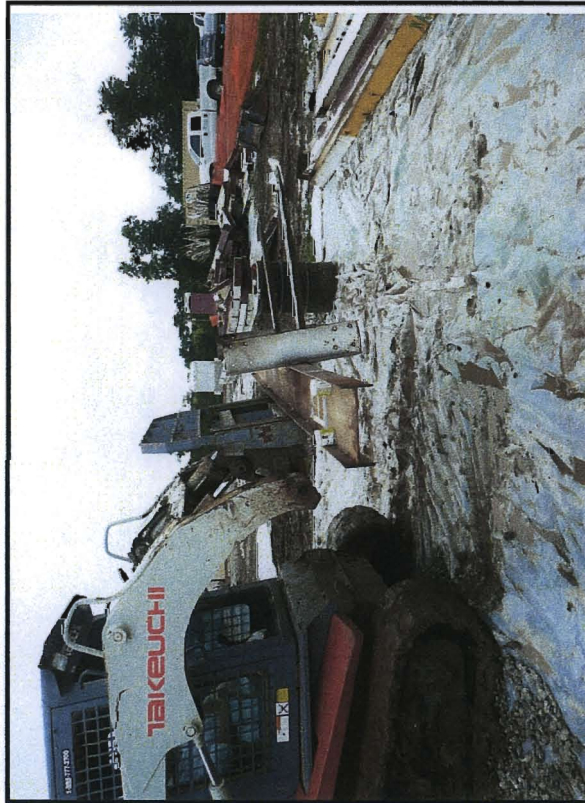
Photograph 46 Wipe Sample Location # 1292LE18



Photograph 47 Wipe Sample Location # 426LE7



Photograph 48 Wipe Sample Location # 450T6

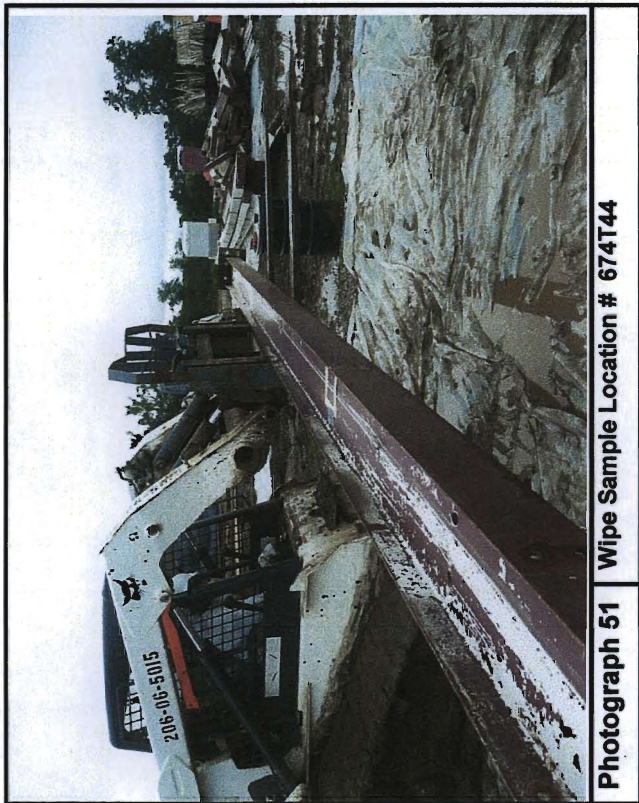


Photograph 49 Wipe Sample Location # 634T36 & 634T37

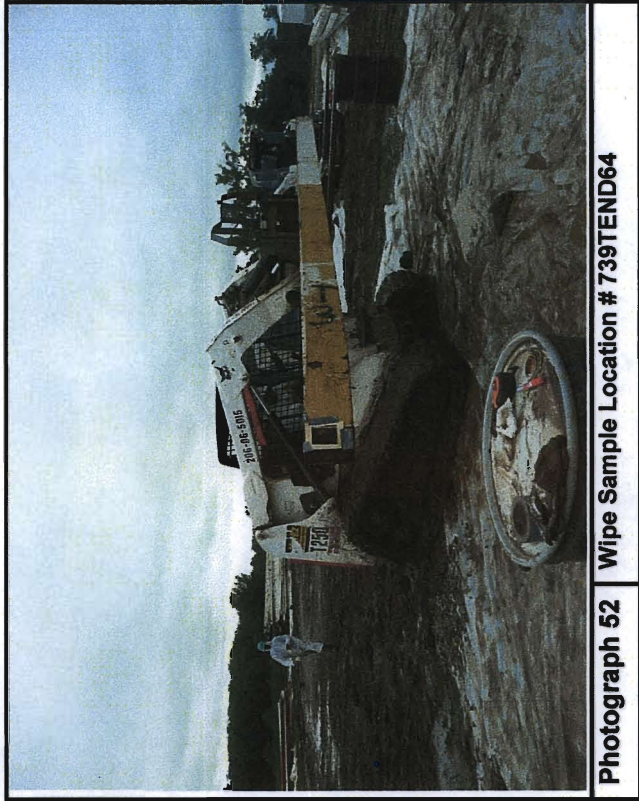


Photograph 50 Wipe Sample Location # 772B33

D0702



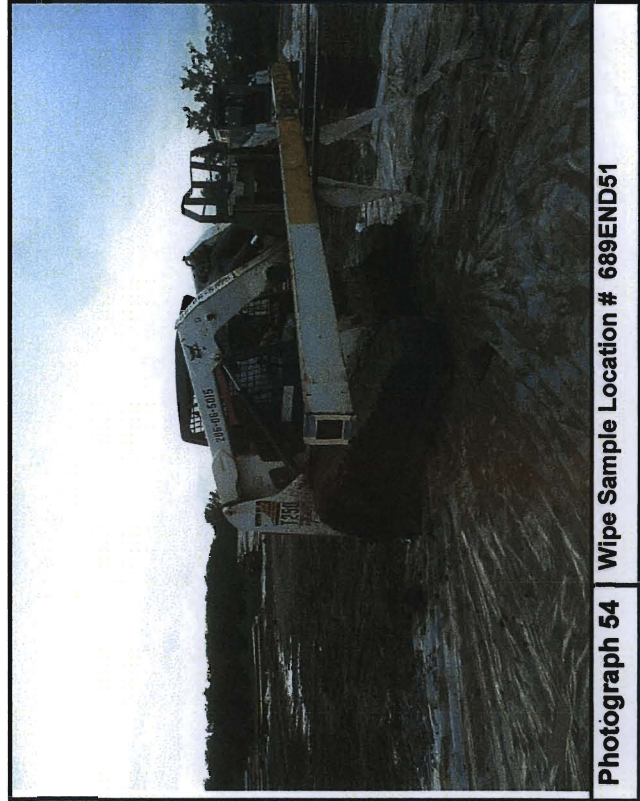
Photograph 51 Wipe Sample Location # 674T44



Photograph 52 Wipe Sample Location # 739TEND64



Photograph 53 Wipe Sample Location # 782L16



Photograph 54 Wipe Sample Location # 689END51

D0703



Photograph 55 | Wipe Sample Location # 709T23



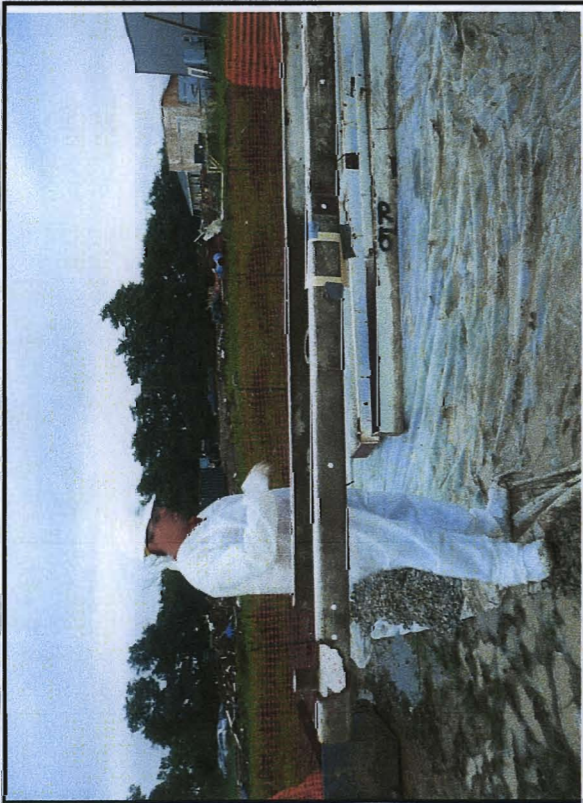
Photograph 56 | Wipe Sample Location # 719L3



Photograph 57 | Wipe Sample Location # 729T6



Photograph 58 | Wipe Sample Location # 807RE52



Photograph 59 Wipe Sample Location # 792RE13



Photograph 60 Wipe Sample Location # 1074R36 & 1074R37

D0705

**Background Soil Sampling – August 11, 2009
Photographs (61 – 68)**

D0706

**SOIL SAMPLE LOG
PCB SAMPLING FOR DICO INC.
SIM – OTTUMWA PCB SITE**

Date: August 11, 2009

Photo No.	Sample No.	Sample Designation	Sample Description	Time Sampled
61 & 62	1	Background South	Background soil sample collected to the south of former Stockpile "C"	9:00
63 & 64	2	Background West 1	Background soil sample collected to the west between former Stockpile "C" location and the western property boundary	9:10
65 & 66	3	Background West 2	Background soil sample collected to the west of former Stockpiles "A & B" location and the western property boundary	9:20
67 & 68	4	Background North	Background soil sample collected to the within the northern portion of property west of the storage area	9:30
NA	5	Roll off Composite	A composite of five soil samples collected from the roll of box for characterization	9:52
NA	6	Paint Chip	A paint chip composite sample collected from two drums containing paint chip from the beams	9:58

*Sunny, hot and muggy (approx. 86°F)

D0707



Photograph 61

Soil Sample - Background South



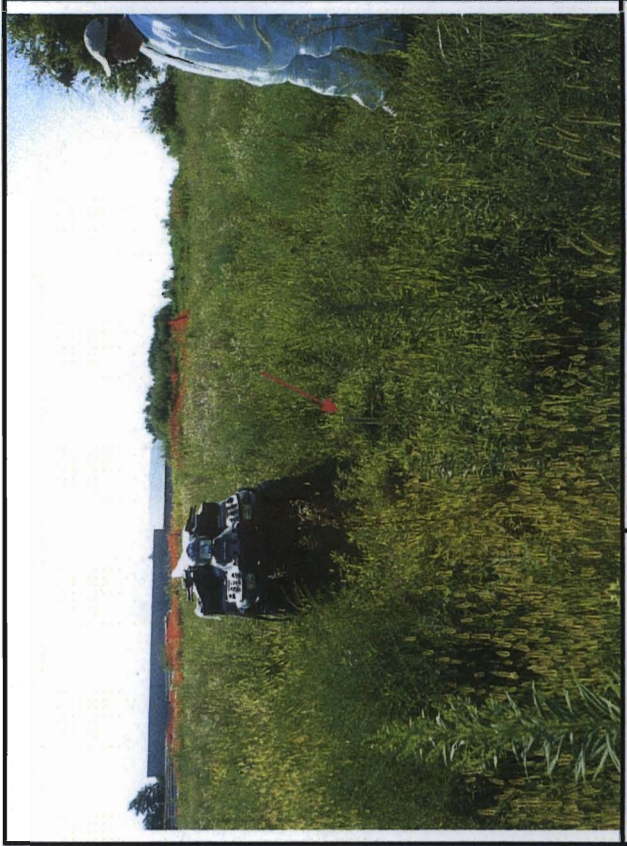
Photograph 62

Soil Sample - Background South



Photograph 63

Soil Sample - Background West 1



Photograph 64

Soil Sample - Background West 1



Photograph 65

Soil Sample # Background West 2



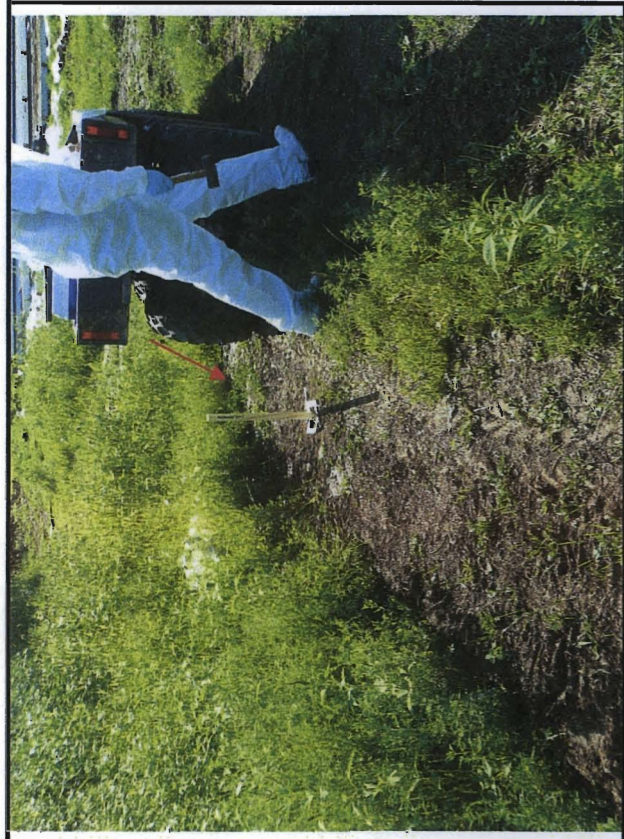
Photograph 66

Soil Sample # Background West 2



Photograph 67

Soil Sample # Background North



Photograph 68

Soil Sample # Background North

D0709

Wipe Sampling – August 11, 2009
Photographs (69 – 92)

D0710

**SAMPLE LOG
WIPE SAMPLE LOG
PCB SAMPLING FOR DICO INC.
SIM - OTTUMWA PCB SITE**

Date: August 11, 2009

(Majority of the sampling locations were selected by USEPA Personnel)

Photo No.	Sample No.	Sample Designation	Sample Description	Time Sampled
69	1	2021 LE32	Residue area from 32 nd grid around bolt on left edge of beam	14:02
70	2	1925L13	Minor residue area from 31 st grid on left side of beam	14:11
71	3	1915R31	Residue area from 31 st grid on right side of beam	14:17
72	4	2043T5	Small short beam with minor residue on 5 th grid of top of beam	14:23
73	5	2053B6	Short beam with residue and peeling paint on the 6 th grid of the bottom of the beam	14:25
74	6	1843BR22	Short beam with residue on the 22 nd grid of the bottom right side of the beam	14:30
75	7	2077TE6	Short beam with minor residue on the 6 th grid of the top edge of the beam	14:33
76	8	2009L5	Large heavy beam with residue area on the 5 th grid on the left side of beam	14:39
77	9	2066B2	Very small beam (~1' long) with minor residue area on 2 nd grid (between 2 bolt holes) at bottom of beam	14:44
78	10	1955T9	Homogeneous area from 9 th grid on top of beam	14:44
78	11	1955T10	Homogeneous surface from 10 th grid on top of beam (adjacent duplicate)	14:48
N/A	12	Field Blank 1	Per QA/QC	14:49
79	13	2033T24	Homogeneous area on 24 th grid on top of beam (adjacent to EPA duplicate from 23 rd grid)	14:56
80	14	1819R23	Minor residue on 23 rd grid on right side of beam	15:02
			Break from hot humid weather	
81	15	1809R44	Residue area from on the 44 th grid of the right side of beam	15:43
82	16	644R55	Long beam with minor residue on 55 th grid on left side of beam	15:51
83	17	654B7	Residue area on 7 th grid of bottom of beam	15:57
84	18	1051R42	Large, wide beam, pink color area on 42 nd grid on right side of beam	16:03
85	19	699B23	Homogeneous yellow surface with minor residue on 23 rd grid on right side of beam	16:09
86	20	613R39	Residue area on 39 th grid on right side of beam	16:15
87	21	664R27	Minor residue area on 27 th grid on right side of beam	16:24
88	22	623L23	Very wide beam, homogeneous surface on 23 rd grid on left side of beam	16:31
88	23	623L24	Very wide beam, homogeneous surface on 24 th grid on left side of beam (adjacent duplicate)	16:32
N/A	24	Field Blank 2	Per QA/QC	16:33
			Approx. 1 hour break to locate other beams for sampling	
89	25	2253T90	Homogeneous area from 90 th grid on top of beam (adjacent to EPA duplicate from 91 st grid)	17:45
90	26	2243R35	Heavy, long beam, with residue area on the 35 th grid on right side of beam	17:54
91	27	2233R26	Very heavy and beam with residue area on 26 th grid on right side of beam	17:58
92	28	749T31	Heavy beam with residue area on 31 st grid on top of beam	118:05

*Sunny, hot and muggy (approx. 86°F)

D0711



Photograph 69

Wipe Sample Location 2021LE32



Photograph 70

Wipe Sample Location 1925L13



Photograph 71

Wipe Sample Location # 1915R31



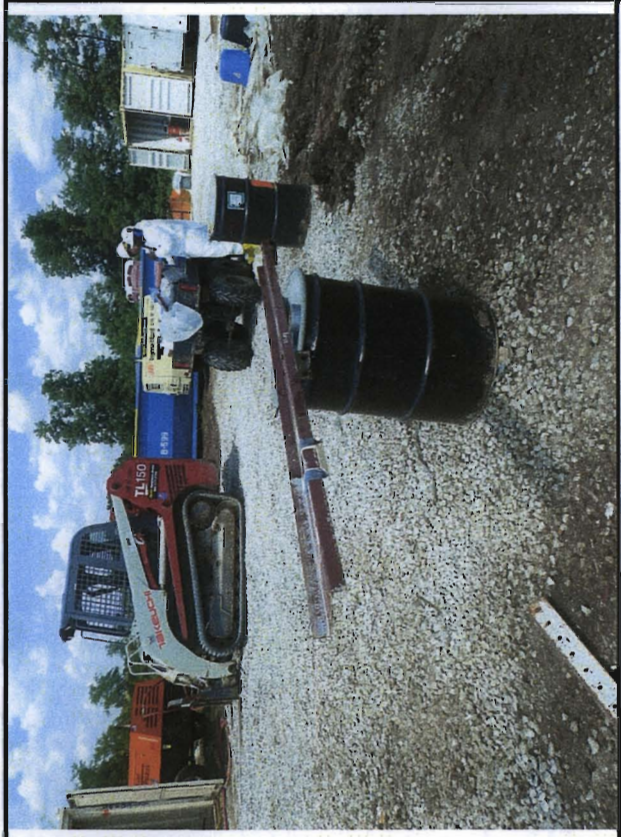
Photograph 72

Wipe Sample Location # 2043T5



Photograph 73

Wipe Sample Location # 2053B6



Photograph 74

Wipe Sample Location # 1843BR22



Photograph 75

Wipe Sample Location # 2077TE6



Photograph 76

Wipe Sample Location # 2009L5